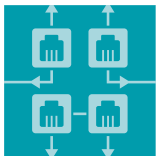




# Network Security Solution Product Selection Guide

••• Network Security Appliance

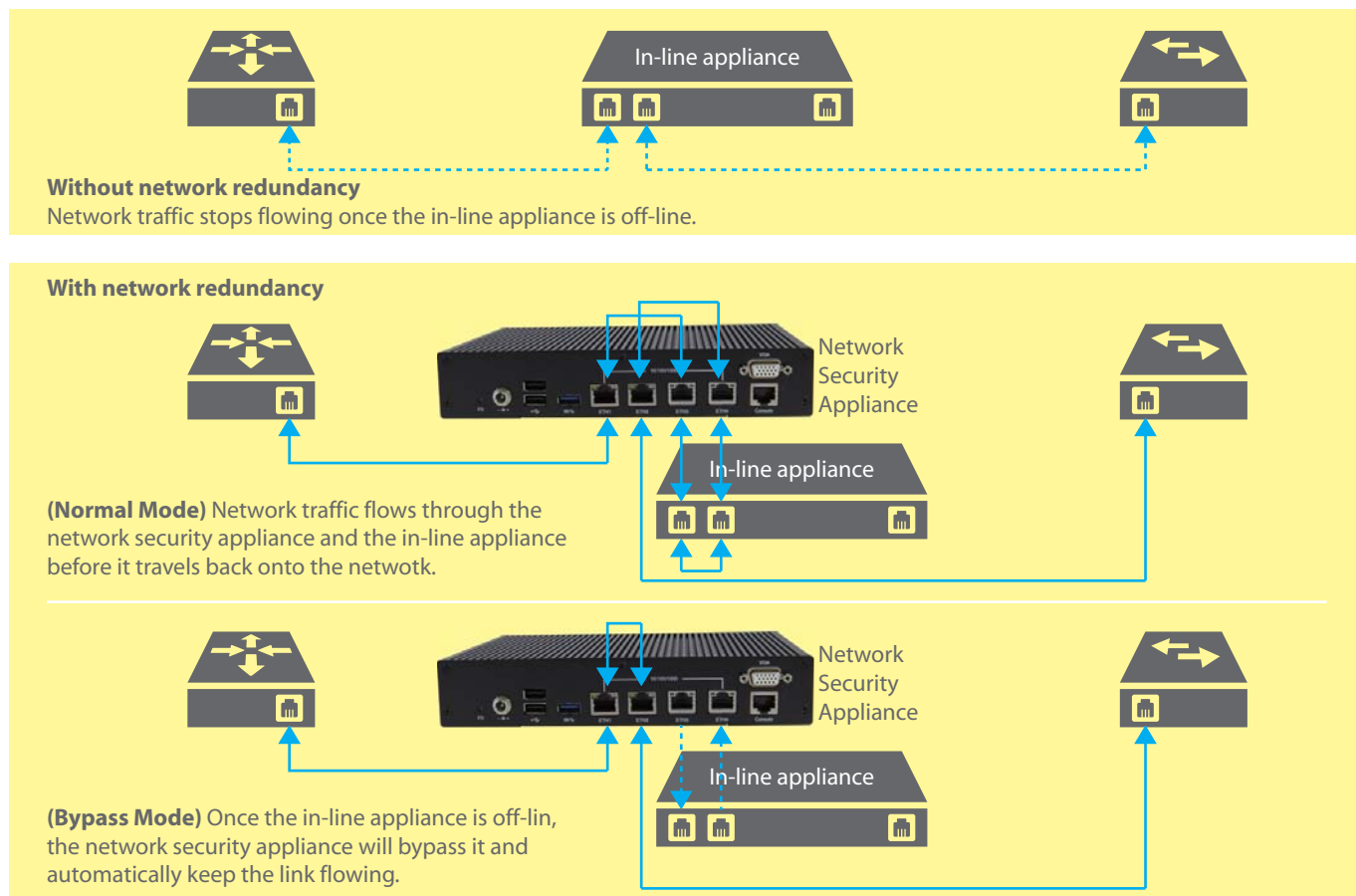


# Solutions for Network Security

Network plays an important role in today's business models. Any accidental or unexpected network outage may eventually cause uncountable damages or losses to information and business. In consequence, building a network redundant mechanism into an enterprise network infrastructure is a smart investment to ensure continuity of communication and data flow.

Quanmax's network security appliances are the right solution to the challenge mentioned above. Equipped with several LAN ports

and supporting LAN bypass function, they can instantly pass the link to the next available paths in case of a single point of network failure. They are therefore suitable for the enterprises who want to build a network redundancy to ensure maximum uptime and availability or for network-based applications such as VPN (Virtual Private Network), IDS (Intrusion Detection System), IPS (Intrusion Prevention System), UTM (Unified Threat Management), network bandwidth controller, anti-spam, anti-virus and so on.



## About Quanmax

Founded in 1999, Quanmax is committed to supply high-quality embedded computing products and solutions to help its clients develop a variety of computer-aided facilities for individual users and business firms in all industries including but not limited to Digital Signage, KIOSK, Gaming, Factory Automation, Machine Automation, Building Automation, Transportation & Logistics, Medical System and Telecom.

Now, Quanmax's businesses can be divided into five categories:  
- Motherboards (ECX, Pico-ITX, Com-Express, QSEVEN,

Mini-ITX, Micro-ATX, ATX)  
- Infotainment Solutions;  
- Automation Solutions;  
- IoT Solutions; and  
- Network Security Solutions.

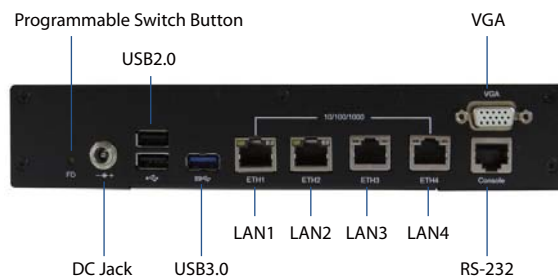
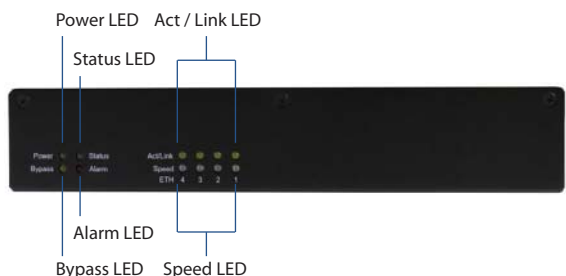
With strong engineering competence in customized design, software integration, system optimization and life cycle management, Quanmax can always launch appropriate products in accordance with each market segment and customer or even more than expected.

# NWA-6300 Series



## Standard / Extended Temperature Network Security Appliance with Intel® BayTrail SoC Processor

- Intel® BayTrail SoC Processor, Atom™ E3825/E3845 / Celeron® J1900
- 1x/2x DDR3L SO-DIMM Socket
- 1x 2.5" SATA HDD/SSD, 1x mSATA, 1x/0x SD Card Cage for storage
- 1x VGA for video output
- 4x LAN for network connection w/ 2x bypass function
- 1x USB3.0, 2x USB2.0, 1x RS-232 for peripheral connection
- Friendly LED indicators
- Fanless design
- Extended temperature model available: -20°C ~ 60°C



<b>Processor</b>	NWA-6300: Intel® Atom™ E3825 (Dual Core, 1M Cache, 1.33 GHz) NWA-6305: Intel® Celeron® J1900 (Quad Core, 2M Cache, up to 2.42 GHz) NWA-6345: Intel® Atom™ E3845 (Quad Core, 2M Cache, 1.91 GHz)
<b>Memory</b>	1x DDR3L 1067 SO-DIMM up to 8 GB (NWA-6300) 2x DDR3L 1333 SO-DIMM up to 8 GB (NWA-6305/6345)
<b>BIOS</b>	AMI uEFI BIOS w/ 64Mb SPI Flash WDT: Programmable WDT to generate system reset or LAN bypass H/W Monitor: Voltages, Temperatures Real Time Clock: SoC integrated RTC TPM: TPM support (Infineon SLB9635)
<b>Storage</b>	1x 2.5" SATA HDD / SSD 1x mSATA 1x SD Card Cage (NWA-6300/6345 only)
<b>Graphics Controller</b>	Intel® HD Graphics (integrated)
<b>Display Interfaces</b>	1x VGA (on rear, 2560 x 1600 @ 60Hz)
<b>Ethernet</b>	4x LAN (on rear, Intel® I210-AT, LAN1 & LAN2 Bypass, PXE support)
<b>USB</b>	1x USB3.0 (Type A on rear) 2x USB2.0 (Type A on rear)
<b>Serial Port</b>	2x RS-232 (RJ-45 on rear, console redirection support)

<b>Power Supply</b>	Connector: Lackable DC Jack (on rear) Input Voltage: DC 9V ~ 24V
<b>Button &amp; Switch</b>	1x Programmable Switch button (on rear, GP input support)
<b>Status Indicators</b>	1x Power LED (on front, green) 1x Status LED for GP output (on front, green) 1x Alarm LED for GP output (on front, red) 1x Bypass LED (on front, yellow) 4x Act/Link LED for LAN1 ~ LAN4 (on front, green) 4x Speed LED for LAN1~LAN4 (on front, 10: off/ 100: green/ 1000: yellow)
<b>Cooling</b>	Fanless
<b>OS Support</b>	Windows, Linux
<b>Construction</b>	Aluminum Chassis
<b>Dimension (W x D x H)</b>	219 x 151 x 40 mm / 8.62" x 5.94" x 1.57"
<b>Weight</b>	1.42 kg / 3.13 lb
<b>Environmental Characteristics</b>	Operating Temperature: 0°C ~ 45°C / 32°F ~ 113°F (NWA-6305) -20°C ~ 60°C / -4°F ~ 140°F (NWA-6300/6345) Storage Temperature: -20°C ~ 80°C / -4°F ~ 176°F Humidity: 0% ~ 95%
<b>Certification</b>	CE, FCC Class A

### Ordering Information

Model Name	Description	Description
NWA-6300	NWA-6300	Intel® Atom™ E3825, 1x DDR3L, 1x 2.5" SATA HDD/SSD, 1x mSATA, 1x SD Card Cage, 1x VGA, 4x LAN, 1x USB3.0, 2x USB2.0, 1x RS-232, Op. temp.: -20°C ~ 60°C
NWA-6305	NWA-6305	Intel® Celeron® J1900, 2x DDR3L, 1x 2.5" SATA HDD/SSD, 1x mSATA, 1x VGA, 4x LAN, 1x USB3.0, 2x USB2.0, 1x RS-232, Op. temp.: 0°C ~ 45°C
NWA-6345	NWA-6345	Intel® Atom™ E3845, 2x DDR3L, 1x 2.5" SATA HDD/SSD, 1x mSATA, 1x SD Card Cage, 1x VGA, 4x LAN, 1x USB3.0, 2x USB2.0, 1x RS-232, Op. temp.: -20°C ~ 60°C



*always the right way with **embedded future***



**Quanmax Inc.**

*Headquarter*

5F, No. 415, Ti-Ding Blvd. Sec. 2, Neihu District,  
Taipei, Taiwan 11493

T +886-2-2799-2789 F +886-2-2799-7399

E sales@quanmax.com www.quanmax.com