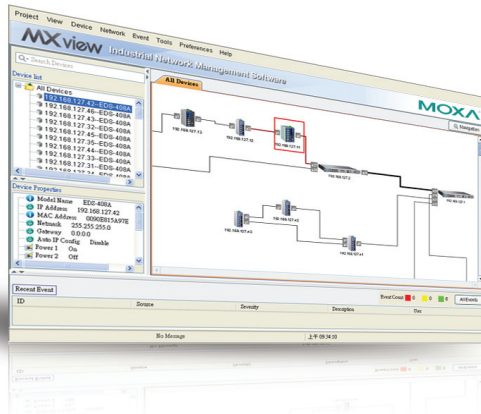


MXview

Industrial network management software designed for Moxa's networking solutions



- Discovers and visualizes network devices automatically
- Monitors up to 1000 network devices and notifies users in real time when events occur
- Provides central management of configurations and firmware for Moxa devices
- Presents historical traffic statistics and comprehensive event logs for troubleshooting
- Generates OPC 2.0 compliant tags automatically to integrate with SCADA/HMI applications
- Allows users to manage networks via web browser anytime
- English and Simplified Chinese user interfaces

Introduction

Moxa's MXview network management software is designed for configuring, monitoring, and troubleshooting Moxa networking devices in industrial networks. MXview provides an integrated management platform that can discover Moxa networking devices and SNMP/IP

devices installed in subnets. All selected network components can be managed graphically via web browser from both local and remote sites—anytime and anywhere.

Automatic Topology Discovery and Visualization

- Discovers Moxa devices and SNMP/ICMP devices within scan ranges
- Maps physical wiring automatically for LLDP devices
- Tabbed windows for 2-layer grouping
- Provides a tool to draw topologies manually
- Visualizes trunking link and wireless link
- A background image can be embedded into the map for reference
- Topology map can be migrated from site to site
- Supports Unicode for internationalization
- Changeable device icons

Real-time Event Notification

- Detects problems by SNMP Inform or Trap in real time
- Periodical polling for comprehensive problems
- Abnormal devices and links are highlighted in maps with specified colors
- Notifies users based on events, including link down, power down, SNMP failure, bandwidth utilization, and packet error rate
- Event notification can be sent remotely via SMS and email
- Event can be alarmed locally by beep and program

Centralized Configuration and Firmware Management

- Remote deployment of device configurations and firmware
- Backup of configurations to local computers

Traffic Reports and Event Logs

- Collects bandwidth utilization and error packet rate statistics
- Provides comprehensive event history for troubleshooting
- Traffic report and event log can be stored

Integration with Other Systems

- Acts as OPC 2.0 compliant server for SCADA/HMI integration

: System Requirements

Server Requirements

CPU	Intel Core 2 Duo 2.4 Ghz or higher
RAM	1 G or higher
Hard Disk Space	10 G or higher
Operating System	Windows XP Professional, Windows 7, Windows Server 2008

Client Requirements

Browser	IE 6/7/8 and Firefox 3
----------------	------------------------

: Ordering Information

Commercial Versions

MXview-1000: Industrial network management software with a license for 1000 nodes (by IP address)

MXview-500: Industrial network management software with a license for 500 nodes (by IP address)

MXview-250: Industrial network management software with a license for 250 nodes (by IP address)

MXview-100: Industrial network management software with a license for 100 nodes (by IP address)

MXview-50: Industrial network management software with a license for 50 nodes (by IP address)

License Upgrade

MXview Upgrade-50: License expansion of MXview industrial network management software by 50 nodes (by IP address)

Trial Version

MXview Trial Version: A free trial version of MXview is available for download from Moxa's website

: Supported Devices

Model Name	Required Firmware Version
EDS-400A	2.6 or higher
EDS-500A	2.6 or higher
EDS-G509	2.6 or higher
EDS-P510	2.6 or higher
EDS-600	1.1 or higher
EDS-728	2.6 or higher
EDS-828	2.6 or higher
IKS-6500	2.6 or higher
IKS-6726	2.6 or higher
PT-7710	1.2 or higher
PT-7728	2.6 or higher
PT-7828	2.6 or higher
PT-G7509	1.1 or higher
TN-5508/5510	1.1 or higher
TN-5516/5518	1.2 or higher
AWK-3121	1.6 or higher
AWK-4121	1.6 or higher

Note: Additional model names will be added in the near future. Please check Moxa's website for the most up-to-date information.