

Tinytag connect



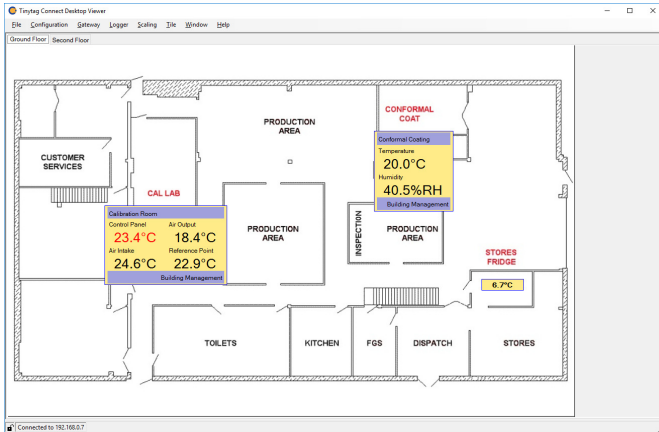
Contents

Introduction	3
Getting Started	4
Gateway Configuration	5
Configuring the Viewer	6
Setting a Background	7
Multiple Windows	8
Setting a Default View	9
Adding Tiles	10
Renaming Channels	11
Alarm Settings	12
Scaling Function	13
Scaling Function - Worked Example	15
Locking Configuration	16
Exporting/Importing Configurations	17
Further Information	18



Introduction

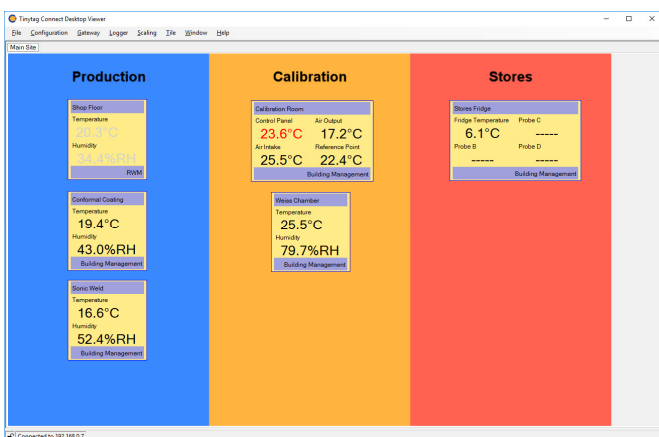
The Tinytag Connect Desktop Viewer is supplementary to the Tinytag Connect software, enabling users to view the status of a Tinytag Connect system at a glance.



The viewer displays current logger information against a background image, with data updating automatically.

Current readings are displayed in black when a logger is in contact with the system. If alarms are set, and the value entered is exceeded, the reading shows in red. If a logger is out of contact with the system, readings are greyed-out.

Background images are set by the user and can be, for example, the floor plan of a building, an aerial photograph of a site or a process flow.



On large sites, or sites with lots of data loggers, multiple windows can be configured to show data clearly.

Readings can be scaled, so voltage, current or count loggers being used with third-party sensors can display data in the relevant units.

The viewer is configured per user and configurations can be exported and applied to viewers on other computers or logins.

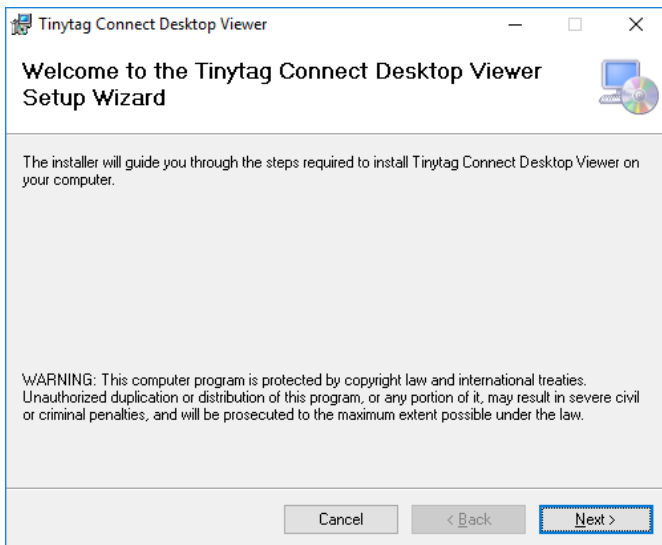
The viewer is read-only and any changes made in it will not affect the set up of the system, or the configuration of the loggers being used. This makes the viewer ideal for users who need to see system data without having access to change system settings.

Users do not need to have the Tinytag Explorer Connect software installed on their PC for the viewer to work.

A maximum of ten concurrent connections can be made to a Connect Master Gateway at any one time (this includes connections from the Tinytag Explorer Connect software).

Getting Started

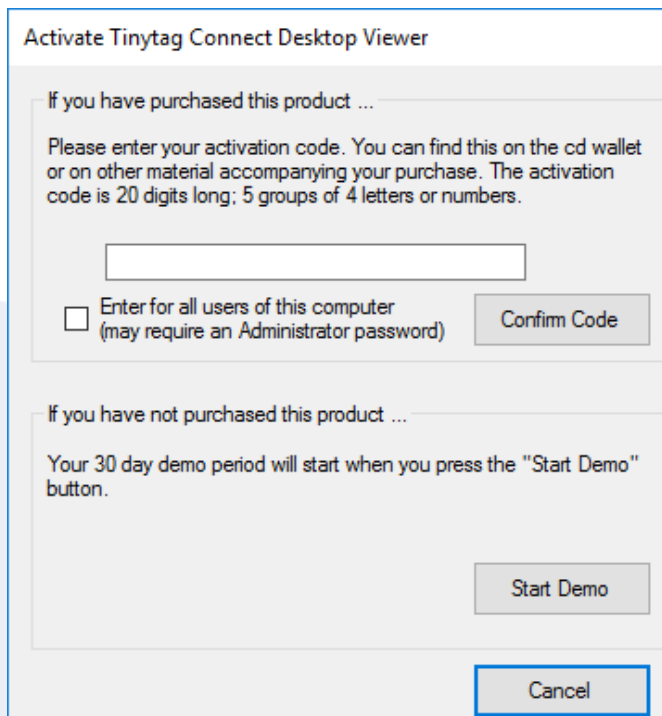
Run the file setup.exe and follow the on-screen prompts.



Once installed, the software can be found in a Tinytag folder on the Start Menu.

Run the program **Tinytag Connect Desktop Viewer**.

When prompted, when first run, please enter the activation code supplied.



Windows Administrator access rights are required to activate the software for all user accounts. Leaving the box unchecked will activate the software for the current user only

Demonstration Mode

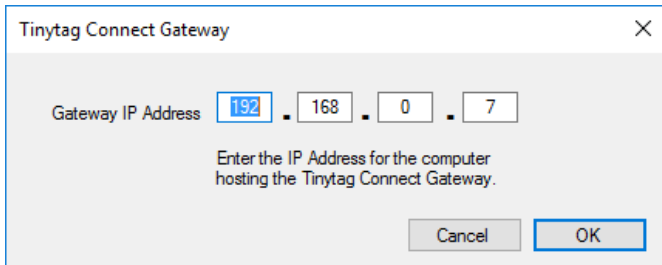
Users evaluating the viewer, who do not have an activation code, can start it by clicking the **Start Demo** button.

The demonstration version of the viewer will operate for 6 weeks and is a fully enabled copy of the software.

Gateway Configuration

To work, the Desktop Viewer needs to know the IP address of the server running the Tinytag Connect Gateway.

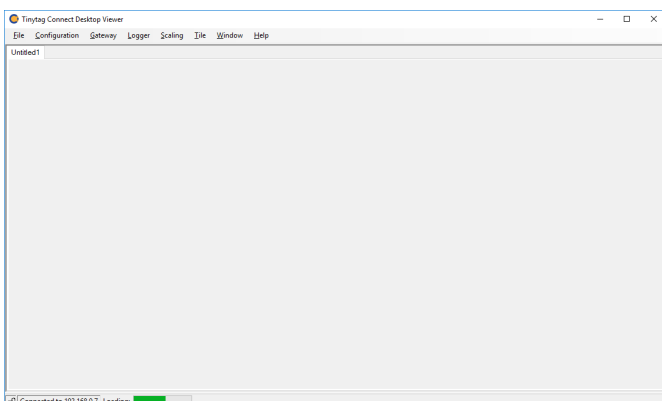
When first run, the software will prompt the user to enter this address.



To find the IP address of the server running the Master Gateway, open Tinytag Explorer Connect on the computer running the Master Gateway and click on the **Tinytag Connect Gateway Status: Connected** message in the bottom right of the screen. On the panel that opens, click on the **Tinytag Connect Gateway** link and the IP address of the Master Gateway will be shown in the web browser that then opens.

If this address needs to be changed to another Gateway at any point, go to **Gateway** and **Gateway Settings** (the viewer will need to be restarted after a new Gateway address is entered).

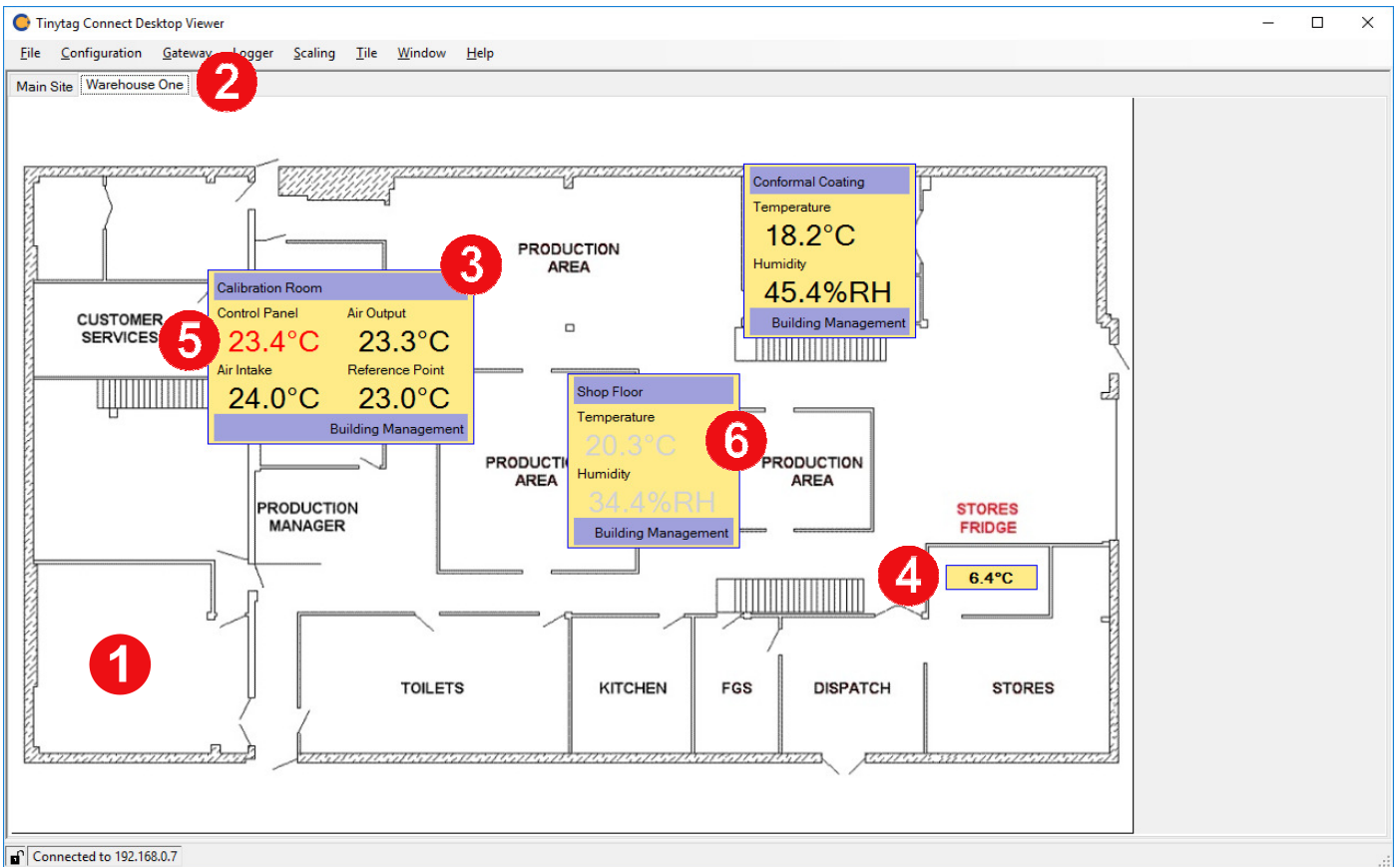
Once the IP address of the Master Gateway has been entered, the viewer will load the list of active Connect Devices, ready for configuration.



Tip: If the viewer fails to connect to the Master Gateway, check that the connection is not being blocked by an intermediate firewall.

Configuring the Viewer

Data is shown by the viewer on tiles that can be displayed against a plain background or against an image.



List of Features:

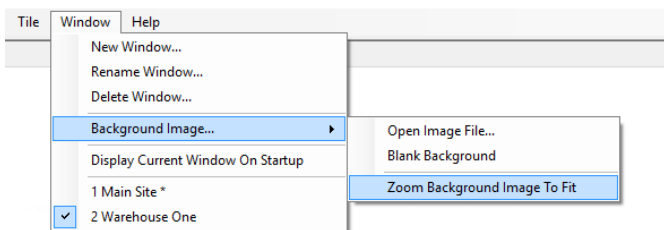
1. Background
2. Tabs for different window views
3. Full Tile; showing logger title, channel and group names
4. Channel Tile; showing a single reading only
5. Alarm warning
6. Logger out of contact

Setting a Background

To add a background to the viewer, go to **Window**, **Background Image** and **Open Image File**. Browse to and select the required image and click **Open**.

The viewer supports JPG, PNG and GIF images; change between the different file types using the drop down menu in the bottom right of the Open screen.

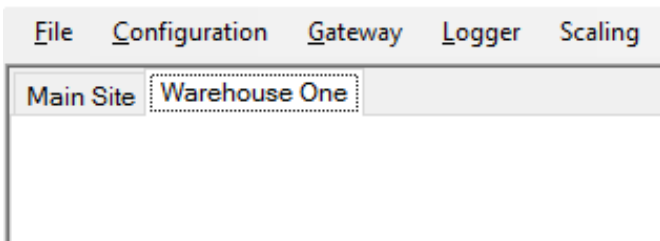
To set an image to the size of the window available, go to **Window**, **Background Image** and **Zoom Background Image to Fit**.



Multiple Windows

For large sites, or sites with a lot of data loggers, multiple windows can be used to display different groups of data loggers.

Tinytag Connect Desktop Viewer

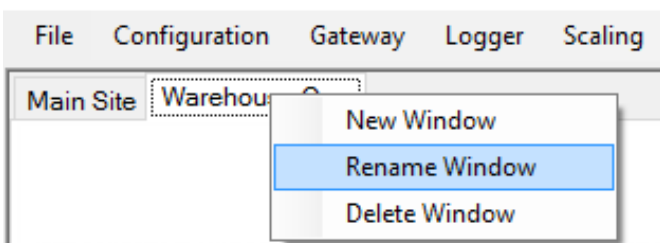


To add a new window to the viewer, go to **Window** and **New Window**. Enter the new window's name and click **OK**.

This will create a new tab in the top left of the viewer, labelled with the name entered.

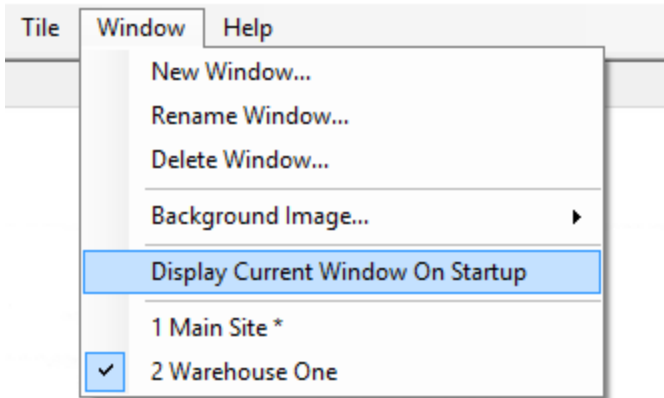
Windows can be renamed or deleted by right-clicking on them and selecting the appropriate option from the drop-down menu that appears.

Tinytag Connect Desktop Viewer



Setting Default View

If using multiple windows, the choice of the background displayed when the viewer is opened can be set by going to the required window and then selecting **Window** and **Display Current Window On Startup**.

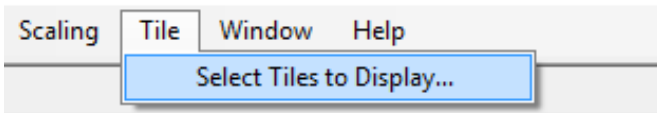


This will set the current window as the default when starting the viewer.

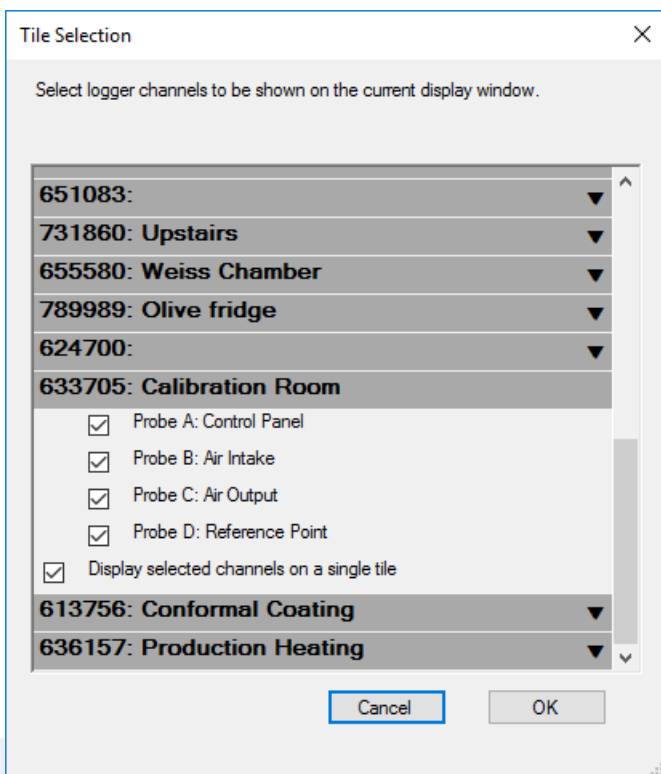
Adding Tiles

Logger data is displayed on tiles.

To add tiles to a window, go to **Tile** and **Select Tiles to Display**.



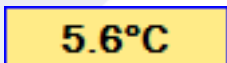
Loggers are listed by serial number and the description they have been given in Tinytag Explorer Connect



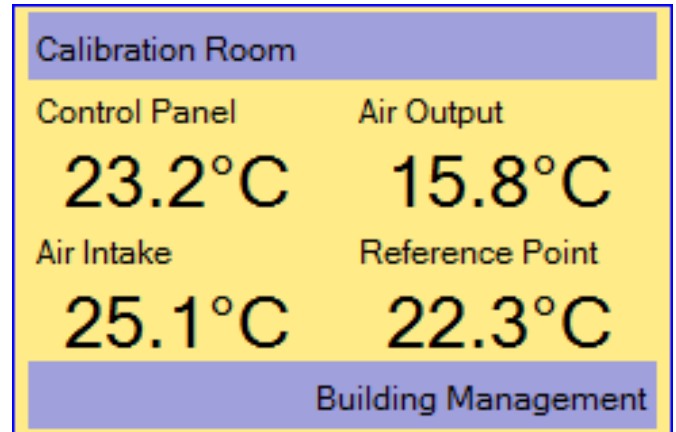
Clicking on the down arrow on the right of the logger entry lists all of the logger's channels.

These can be displayed individually, by selecting individual channels, or they can be grouped together on the same tile by selecting the **Display selected channels on a single tile** option.

If individual channels are selected, only the property being recorded is shown.



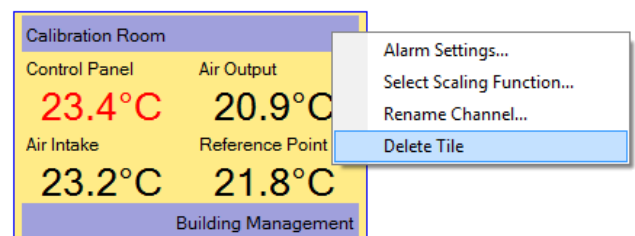
If multiple channels are displayed together on the same tile, the logging description, all of the channel labels and the name of the group the logger is in will all be displayed.



Select the loggers and/or channels to be displayed and click **OK** (it may take a few moments for the display to update after doing this).

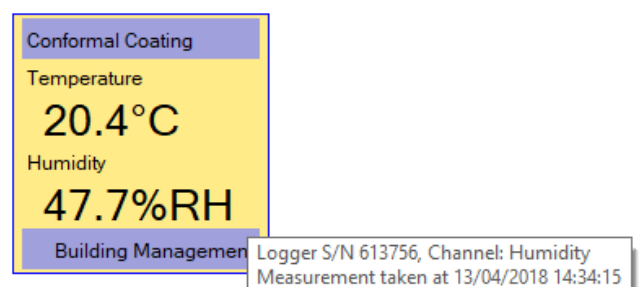
Once selected, tiles will cascade across the screen and can be dragged to the required position by left-clicking anywhere on the tile and holding down the button as the mouse is moved across the screen. When in position, let go of the left-hand mouse button.

To remove tiles from a window, right-click on the tile and select the **Delete Tile** option.



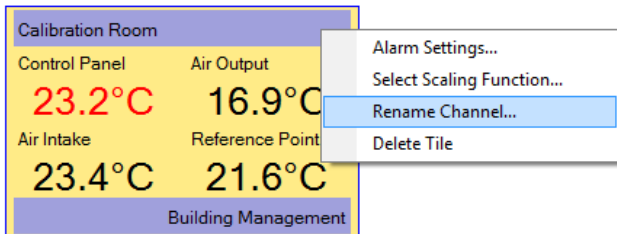
To change the channels being displayed, go to **Tiles** and **Select Tiles to Display** and edit the channels as required.

Once set up, additional logger information is displayed when the mouse cursor is moved over a tile.



Renaming Channels

When created, tiles use the channel names they have been give in Tinytag Explorer Connect, but these can be changed in the viewer by right-clicking on a tile and selecting the **Rename Channel** option (this will not change the configured channel labels in Tinytag Explorer Connect).



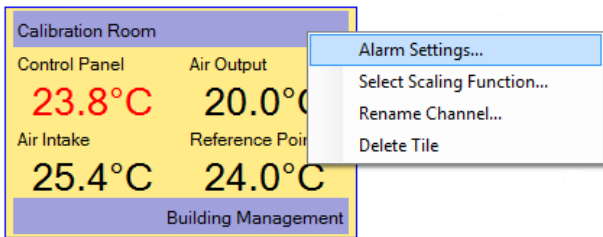
Tip: This feature is especially useful for loggers that have been rescaled to another property (for further information, see the **Scaling Functions** section, on page 13).

Alarm Settings

NOTE: Alarms set in the viewer are independent from the alarms set in Tinytag Explorer Connect that trigger system e-mail alerts. For more information on e-mail alerts, please see the Tinytag Connect manual.

Alarms can be set in the viewer so that readings show in red when they are out of specification.

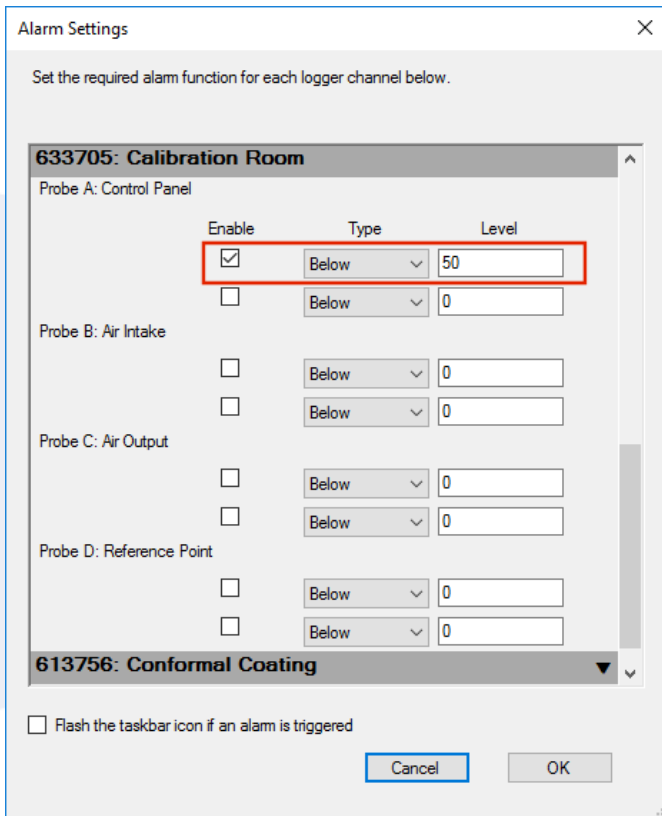
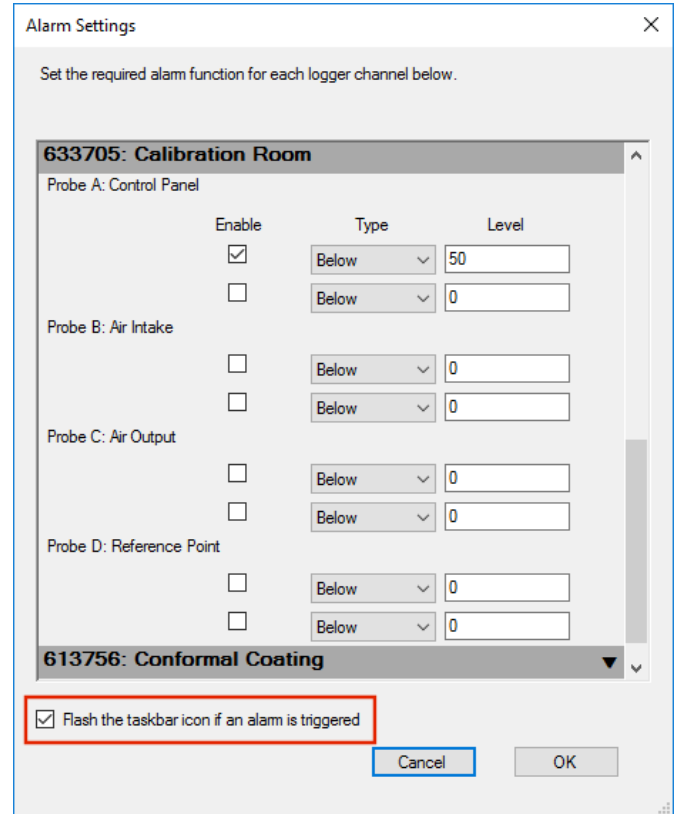
To set an alarm, right-click on the desired tile and select the **Alarm Settings** option on the menu that appears.



The Alarm Settings window will open displaying the channels for the logger tile selected, but all loggers are listed and can be configured at the same time.

The Alarm Settings option allows for two alarms to be set for each channel of the logger, and each can be set to trigger above or below the value entered.

An option to flash the taskbar icon of the viewer orange, when alarm is active, can alert the user to a problem when the application is minimised. To select this, check the **Flash the taskbar icon if an alarm is triggered option** (Note, this option is applied globally to the viewer, not just the logger or channels being worked on).

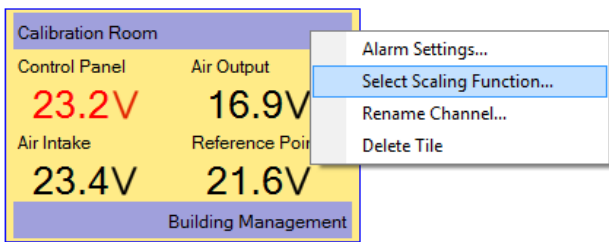


Scaling Functions

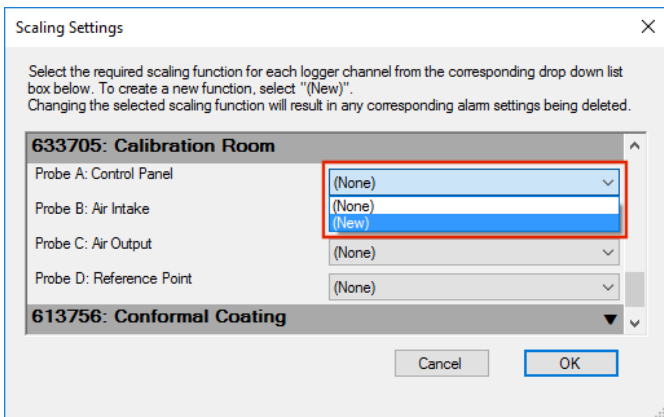
The Tinytag Connect system supports a range of voltage, current and count input data loggers.

Readings in the viewer can be set up with the relevant scaling and units for any third-party sensors these types of logger are used with.

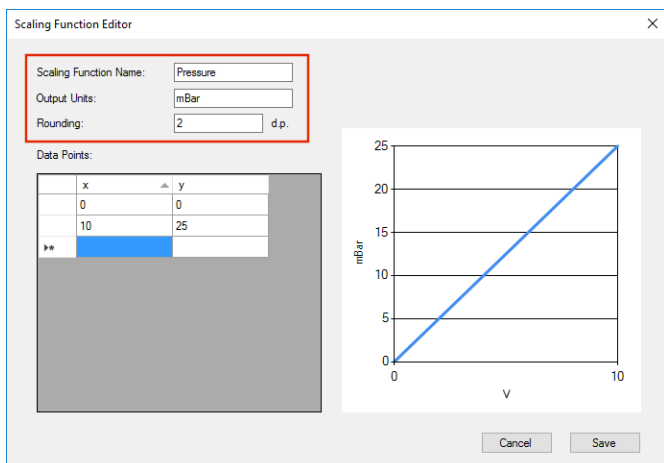
To change the scale on a logger, right-click on a logger tile and select the **Select Scaling Function** option.



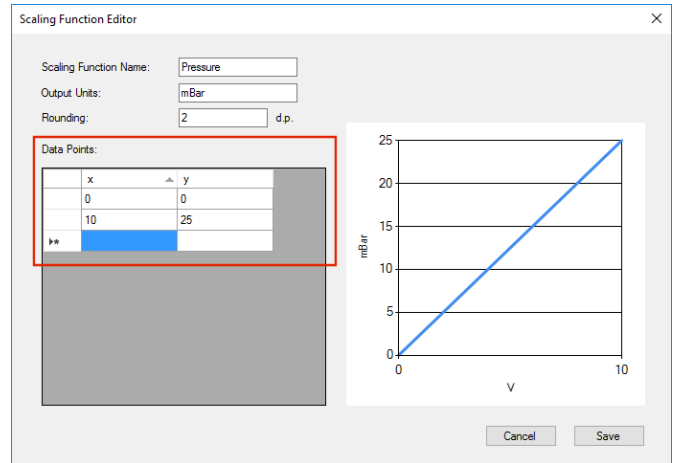
Next, select the **New** option from the channel to be scaled.



Next, enter a name for the new function, the units the data should display with and the number of decimal places it should be viewed to.

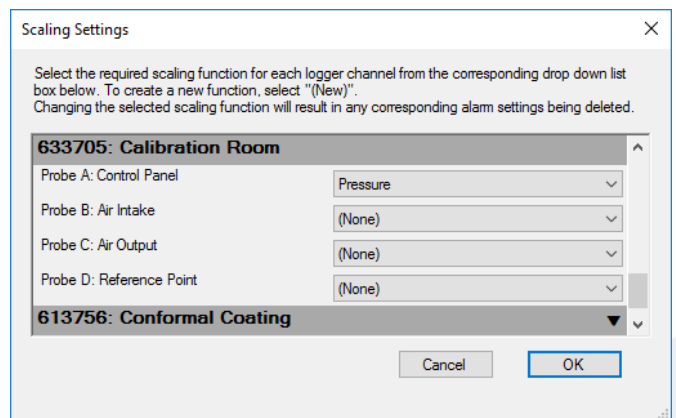


Next, edit the scaling function for the logger. This function is linear between the points specified and the upper and lower points have to remain the upper and lower limits of the logger.

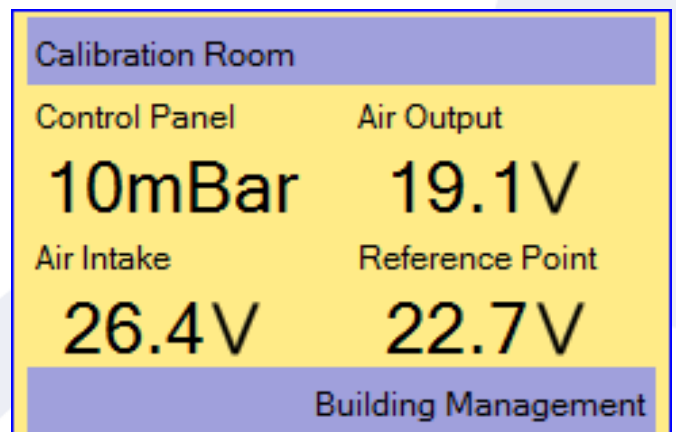


As the transfer function is updated, the graph on the right of the window will update automatically. When configured as required, click **Save**.

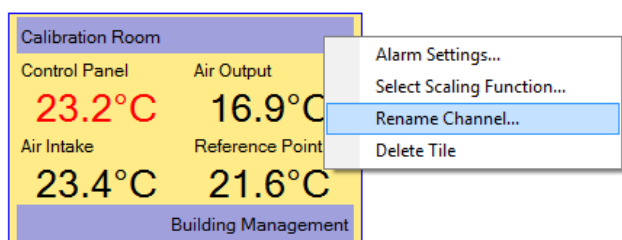
On the Scaling Settings screen, the new scaling function will list for the channel selected; click **OK** to apply this to the viewer.



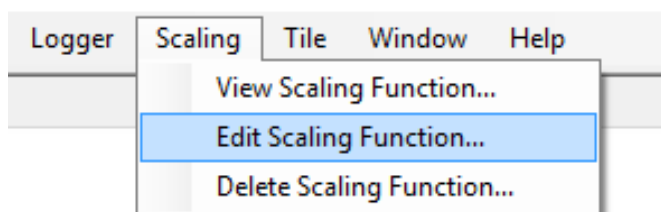
The new function will be applied to the logger's tile accordingly:



To change the property being displayed above the scaled reading, right-click on the reading and select the **Rename Channel** option.



Scaling functions can be edited and deleted from the **Scaling** menu.



Note: Selecting a new scaling function for a logger or channel will clear any alarms set.

Note: To delete a point from a table, click the leftmost cell, so that both values are highlighted, and then press the **Delete** key.

Note: Scaling loggers only affects the readings as displayed in this viewer. Readings recorded by the loggers, as shown when a logger is downloaded in Tinytag Explorer Connect, will still show in their original property (e.g. voltage, current or count etc.).

Scaling Function - Worked Example

The following is an example of how to use the scaling function to display readings for a pressure sensor connected to a current data logger.

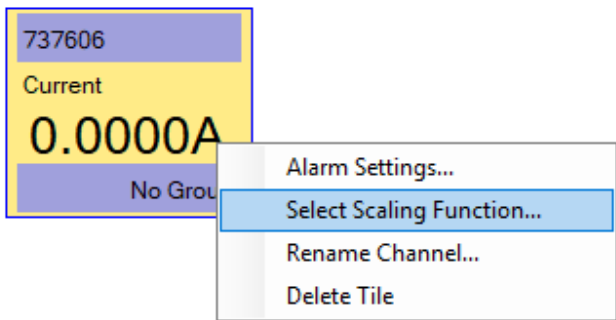
In this example, a 4-20mA output pressure sensor is to be connected to a TR-3804 0-20mA current logger.

The sensor is calibrated to give a loop current of 4mA at 0psi, and 20mA at 100psi. This defines two points in the scaling function.

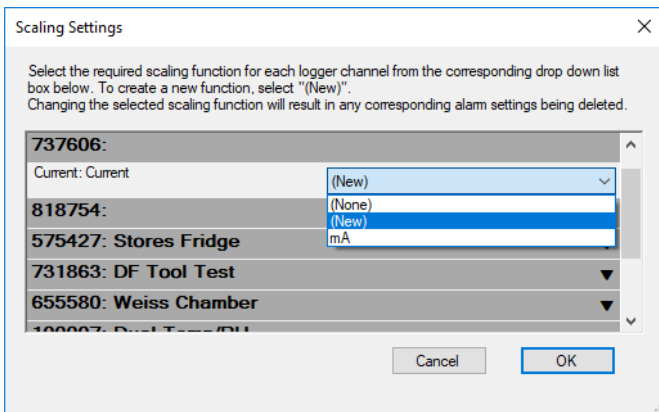
However the software requires that the scaling function is defined for the entire measurement range of the logger. In the case of TR-3804, the measurement range is 0 to 20mA.

The scaling function should therefore be applied as described below.

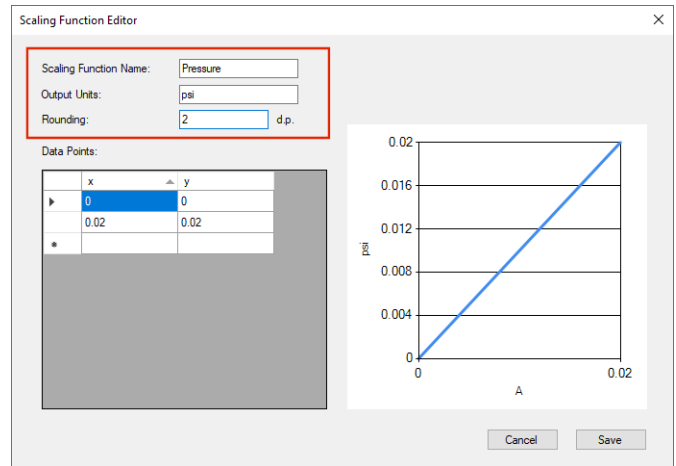
Right click on the tile channel to be scaled and select the **Select Scaling Function** option:



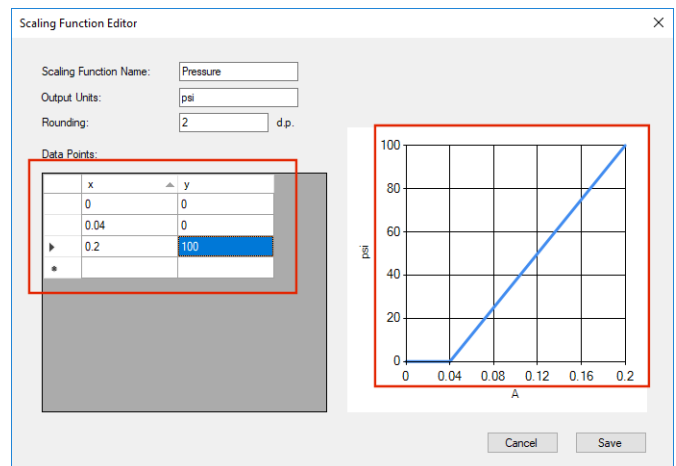
Select **New** from the drop down menu for the correct channel:



Enter a name for the new function, along with the units and the number of decimal places the results should be displayed to:



Because the logger reads from 0mA and the sensor output starts at 4mA, the 0 to 4mA part of the function needs to be set to read 0psi. The 20mA point of the function also needs to be re-scaled to 100psi. The edited table looks like this:

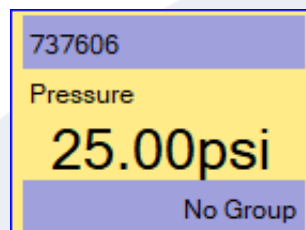


As changes are made to the function, the graph on the right of the window will automatically update.

Once the function has been set up, click **Save**.

On the Scaling Settings Window make sure the Pressure function has been selected and click **OK**.

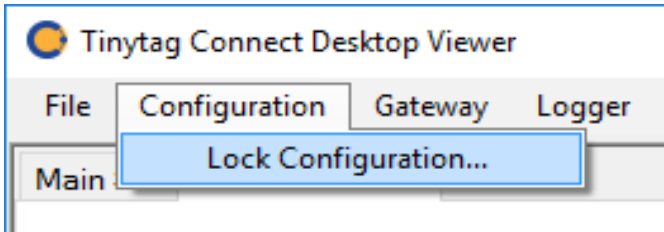
If required, rename the channel title by right-clicking on it, selecting **Rename Channel**, entering the new label (in this case Pressure) and clicking **OK**.



Locking Configuration

Once configured, the viewer can be locked to avoid users accidentally moving or altering tiles.

To do this, go to **Configuration** and **Lock Configuration**.



A tick next to Lock Configuration indicates the configuration is locked.

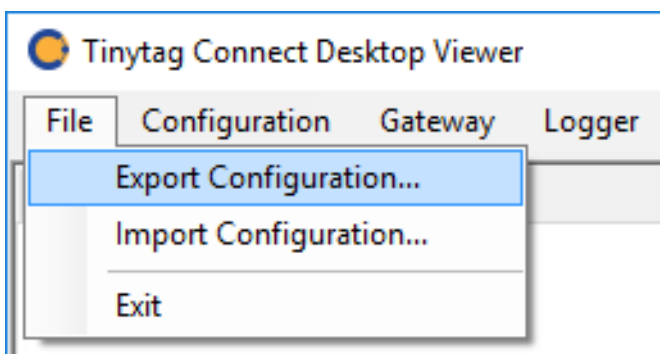
The configuration can be unlocked at any time by de-selecting Lock Configuration.

Exporting/Importing Configurations

Configurations are applied to user accounts (not per computer).

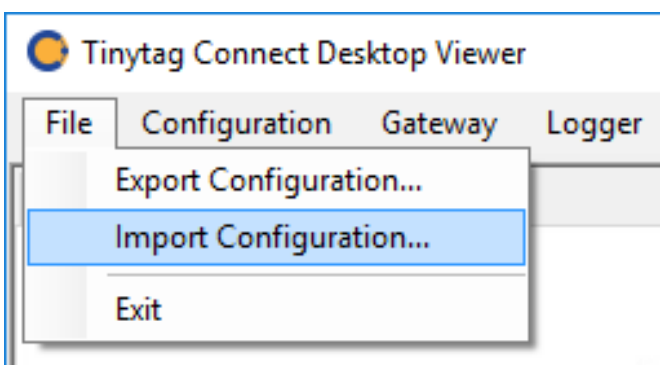
To set up multiple user accounts to display data in the same way, the viewer has an export option that allows configurations to be copied from one account to another (this copies the complete configuration, including all windows, backgrounds, tiles and any alarms and scaling applied).

To make a copy of a configuration go to **File** and **Export Configuration**.



This will save the configuration in a file with a .tcf file extension.

To import a configuration onto another computer or user account, go to **File** and **Import Configuration**.



If the screen of the new computer has different display settings to that of the computer the configuration was exported from, the viewer may resize itself, in which case the background may need to be resized and the tiles moved as described previously in this guide.

Note: If importing a configuration into a new installation, the IP address of the Gateway has to be entered before the configuration can be imported.

Further Information

For further information on this viewer and other Tinytag products, please visit:

www.tinytag.info/support

Or contact Gemini Technical support directly:

e: help@tinytag.info

t: +44 (0)1243 813009

Gemini Data Loggers (UK) Ltd

Scientific House, Terminus Road,
Chichester, West Sussex,
PO19 8UJ,

T: +44 (0)1243 813000

E: info@tinytag.info

9800-0068 ISSUE 1 (13th April 2018)

Gemini
DATA LOGGERS