

# SoftNVR

**Expandable IP surveillance software for managing up to 64 video channels**



Moxa's SoftNVR IP surveillance software can be used to record video over the network and manage up to 64 video stream channels generated by Moxa's video encoders (VPort 351, VPort 354, VPort 254, VPort 251) and IP cameras (VPort 25 series) simultaneously. Features include dual monitor display, video analysis, instant alarm, event recording, and video enhancement tools. SoftNVR gives users an advanced video management tool for medium to large video surveillance networking systems.

## Features

- Up to 64 channels in one system



- Dual monitor display capability for convenient viewing



- Video analysis with moving objects, and video loss detection



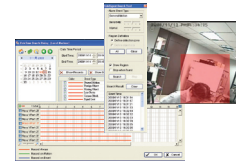
- Instant response for alarm notification



- Simple and user-friendly setup for recording schedules



- Multifunction playback system with intelligent search



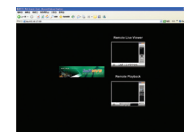
- Video enhancement tools for image quality tuning



- I/O device integration



- Live viewing from popular web browsers



## Introduction

### Live Display

- Display a maximum of 64 channels, which can be configured for different modes, and in full screen.
- Dual monitor support:
  - Focus on important areas: Users can set one screen to monitor general cameras and the other to monitor important cameras.
  - Live view and playback at the same time: Users can set one screen to watch a live view, and use the other to play back images.
- A "Detected Event" for the spot monitor application can pop up in the secondary monitor while the primary one is viewing live video.
- Adjustable monitor windows: Supports 1, 4, 6, 9, 10, 13, 16, 25, 36, 49, or 64 divided windows in full screen and when using the "display in turns" function.
- Multiple views: Show images from one video source on multiple screens.

### PTZ Control

- PTZ preset point: Save the definition of PTZ camera lens as a preset point and allow camera to move quickly to that location.
- Patrol: Allow camera to patrol an area based on a combined set of preset points.
- Digital PTZ:
  - Focus on any location you would like to highlight.
  - "Digital PTZ" and "Multiple Show" allow you to put the focus from single video resource anywhere you want.

## Smart Detection

- Smart detection of 9 different events
  - General Motion
  - Object Disappears
  - Object Appears
  - Lost Focus
  - Camera Occlusion
  - Lost Signal
  - Signal Digital Input
  - System alarm when Disk Space Exhausted
  - System alarm when System Health Unusual
- Instant response for event alarms
  - On Screen Display
  - Play Sound
  - Send Email
  - PTZ Preset Go
  - Signal Digital Output

## Recording and Schedule

- Video compression with MPEG4 and MJPEG.
- Record synchronized audio and video.
- Auto recycling when storage disk is full.
- Recording modes: Continuous record, record by event, record by digital input, record by motion, record by schedule, and manual recording.
- Recording schedule: Record daily, weekly, or by repeat schedule.
- Videos and images can be saved in outer storage devices such as DAS, NAS, or SAN without any limitations; useful if you need to increase your storage space in the future.

## Remote Access

- Remote Live View by client program and web browser.
- Remote Playback by client program and web browser.
- Remote control PTZ camera.

## Playback & Search

- Play back a maximum of 16 channels under different modes and in full screen.
- Intelligent search and smart search modes by event, area, camera, date, time, or log file.
- Administrator can configure the path to the recording database, without limitation. Unlimited support for additional storage devices.
- A search for a recorded video is based on the time period and event, which is the easiest and most efficient way to find the target recorded video.
- Complete playback control: Playback, reverse playback, fast forward.
- Digital zoom in to a specific area.
- Export video to AVI or ASF files.
- Export a single frame to a BMP or JPEG file and print it out.
- Back up the video by burning it to a disc and onto the hard disk.
- Video enhancement: Visibility, sharpness, brightness, contract, grayscale.

## System

- User-friendly control interface; no complicated control window, making it easy for anyone with basic computer knowledge to use.
- Administrator can auto log in from a certain account, and enable, add, edit, and delete users without limitation. Configure access rights for users.
- Only the users in the administrator group can exit the Main Console.
- Can monitor connection conditions, such as Account, login time, flow rate, and IP address. Includes remote control information for analyzing data and sorting out responsibilities.
- Log data: Unusual event, system log, counting application can export to "xls" or "txt" file.
- Execute recording, smart guard, and other functions in the background after logging out of the system.
- Supports 22 languages: English, Traditional Chinese, Simplified Chinese, Japanese, French, Spanish, German, Italian, Turkish, Danish, Hungarian, Greece, Finnish, Russian, Thai, Czech, Slovak, Korean, Portuguese, Portuguese (Brazil), Hebrew, Persian

## : System Requirements

Total FPS at CIF	600 or more	480 to 600	240 to 480	120 to 240	less than 120
CPU	Intel Core 2 Duo QX6700	Intel Core 2 Duo E6400	Intel Pentium D 930	Intel P4 2.8 GHz	Intel P4 2.4 GHz
RAM	2 GB	1 GB	1 GB	512 MB	512 MB
Motherboard	Intel 945 or 965 chip, Intel chipset recommended				
Display	ATI Radeon 9200, nVIDIA GeForce FX-5200, Intel 945 / 965, or above (ATI recommended)				
Ethernet	100BaseT(X) or above, Gigabit LAN recommended				
Hard Disk	80 GB or above				
OS	MS Windows 2000/XP Pro SP2/2003				

## : Ordering Information

### Available Models

**SoftNVR-4/8/16/25/32/64:** SoftNVR with 4/8/16/25/32/64-channel license Key Pro

### Package Checklist

**SoftNVR CD:** Includes the SoftNVR software and related documents

**Key Pro:** Plugs into the USB port

**Printed Manual:** Moxa SoftNVR Quick Installation Guide