

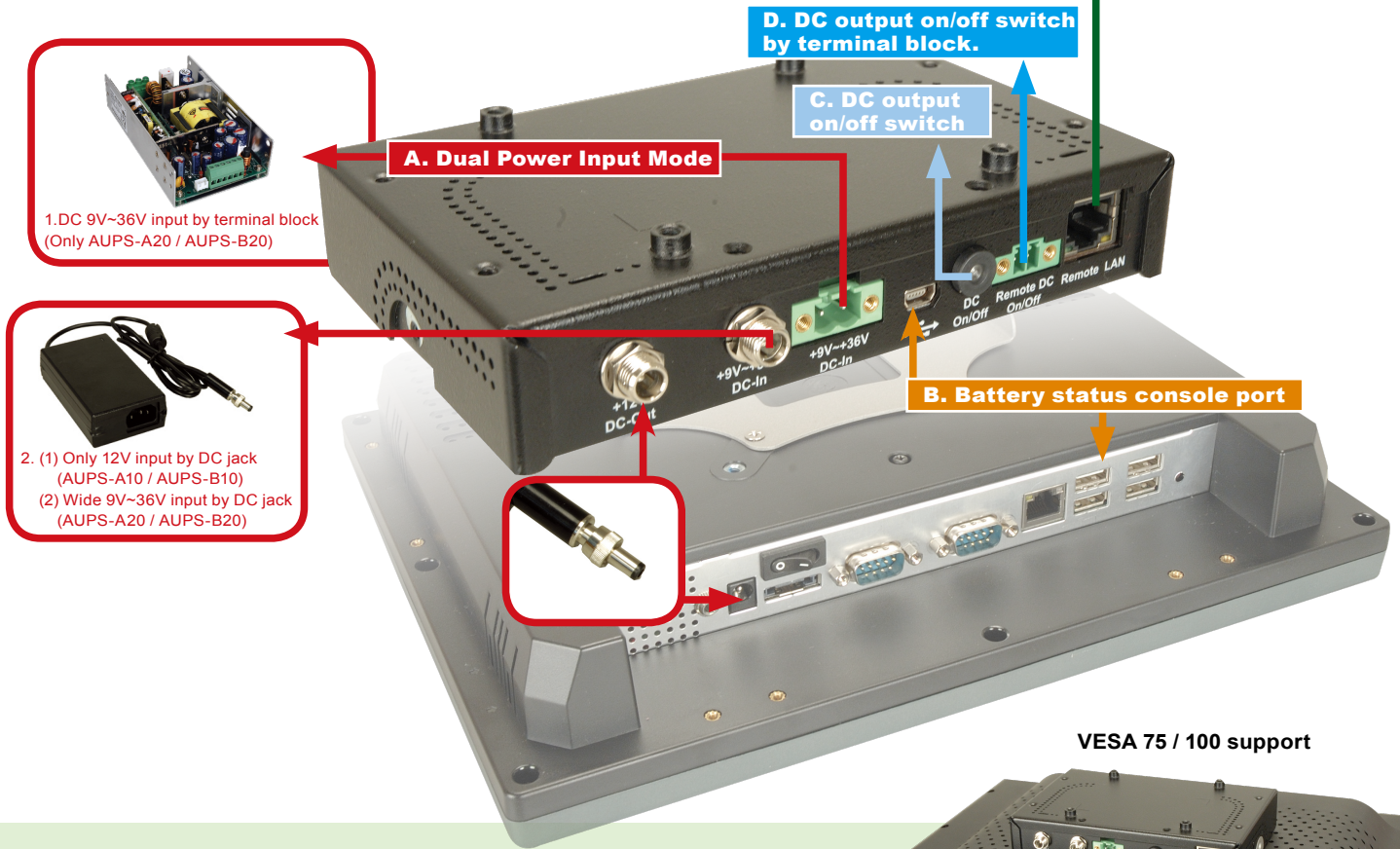


# Optional VESA Mount DC UPS Module

## AUPS VESA Mount Intelligent UPS Module

E. Networking UPS Management Port by RJ-45

AUPS



1. DC 9V~36V input by terminal block (Only AUPS-A20 / AUPS-B20)

2. (1) Only 12V input by DC jack (AUPS-A10 / AUPS-B10)  
(2) Wide 9V~36V input by DC jack (AUPS-A20 / AUPS-B20)

VESA 75 / 100 support



### Feature:

1. VESA 75/100 standard for all AFL products
2. Wide range power voltage 9V-36V by DC jack or terminal block input
3. Enhance charger and battery status utility network remote management software

### ► Specifications

VESA Type		VESA75		VESA100	
Model Name		AUPS-A10	AUPS-A20	AUPS-B10	AUPS-B20
Output	Voltage	+12V +/-5%	+12V +/-5%	+12V +/-5%	+12V +/-5%
	Output Power	60W	60W	100W	100W
Input	Voltage	+12V	+9V~+36V	+12V	+9V~+36V
	Type	Li-Ion 2S2P	Li-Ion 2S2P	Li-Ion 4S2P	Li-Ion 4S2P
Battery	Normal Voltage	7.4V 3800mAH	7.4V 3800mAH	14.8V, 3800mAH	14.8V, 3800mAH
	Backup	60W/10Min	60W/10Min	100W/10Min	100W/10Min
Physical	Dimensions	150mm(L) * 95mm(W)*34mm(H)	150mm(L) * 95mm(W)*34mm(H)	170mm(L) * 150mm(W)*34mm(H)	170mm(L) * 150mm(W)*34mm(H)
	Weight	1.2kg	1.2kg	1.8kg	1.8kg
LED Indicator	Green	DC power input	DC power input	DC power input	DC power input
	Yellow	Battery charging	Battery charging	Battery charging	Battery charging
	Orange	Battery discharging	Battery discharging	Battery discharging	Battery discharging
Environment	Operating Tem.	0°C~40°C	0°C~40°C	0°C~40°C	0°C~40°C
	Storage Tem.	-20°C~50°C	-20°C~50°C	-20°C~50°C	-20°C~50°C

## • Network remote management software

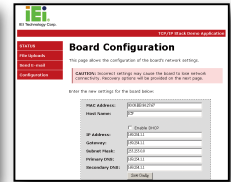


E-Mail Alarming

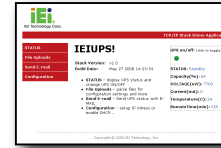
**Battery Low / Temperature High Alarm**  
IEI UPS will pop-up the status screen to notify user that special event, Battery Low or Temperature over 60°C, has happened, if this function is enabled.



E-mail



configuration

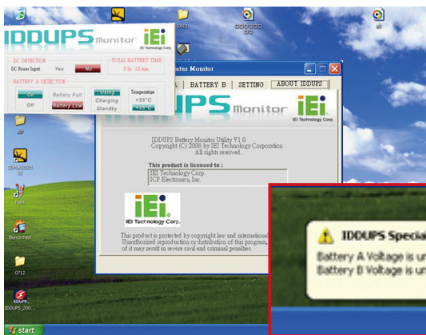


Status



Upload

## • Battery Monitoring Utility



Normal Icon



DC Input only



Charging



Capacity 50%



Capacity 100%

### IEI smart battery software

1. Battery detection
2. Battery capacity status
3. Battery charge
4. DC Input Indicator
5. Battery Indicator
6. Over Temp Indicator
7. Low Battery Alarm
8. Connection port detection

In addition, the utility software provide the following functions:

- » Current Power source.
- » Battery status.
- » Charging status.
- » Percentage remaining

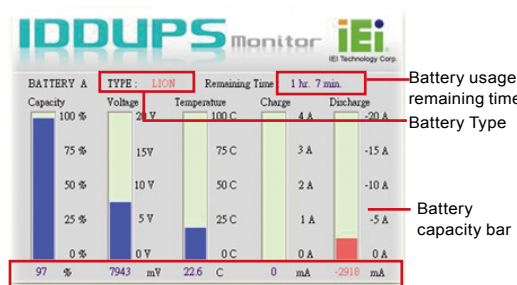
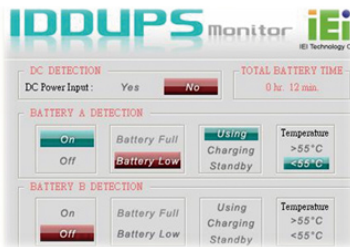
### Benefit:

- » Provide power for certain period of time after a power fail has occurred.
- » Continue to provide stable power to equipment during line sags & spikes.
- » Absorb power surges & transients.
- » Smooth out noisy power sources.

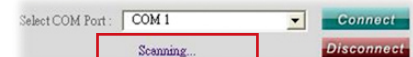
### ► DC / Battery input detection

### ► Battery status real time monitoring

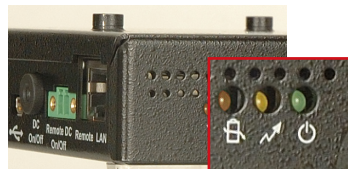
### ► Connection Port auto detection



Real time information updating



Auto-Scan Com port



LED Signal Table			
	LED 1	LED 2	LED 3
Color	Green	Yellow	Orange
Function	Power Input	Charger Status	Battery Status
Dark	DC Power In	Discharging	Battery Full
Light	DC Power In	Discharging	Battery Full
Blinking		Charging	Battery Low

## ► Ordering Information

Part Number	Description
AUPS-A10-R10	VESA 75, DC 12V input 60W UPS module with 3800mAH, 2S2P Li-Ion battery
AUPS-A20-R10	VESA 75, DC 9~36V input 60W UPS module with 3800mAH, 2S2P Li-Ion battery
AUPS-B10-R10	VESA 100, DC 12V input 100W UPS module with 3800mAH, 4S4P Li-Ion battery
AUPS-B20-R10	VESA 100, DC 9~36V input 100W UPS module with 3800mAH, 4S4P Li-Ion battery

## ► Packing List

- 1 x DC jack cable
- 1 x USB cable
- 1 x screw kit