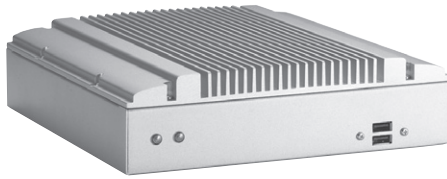


eBOX746A-FL

Fanless Embedded System with VIA Processor up to 1.5 GHz



▲ Front view



Specifications

Standard Color	Silver
Construction	Aluminum extrusion and heavy-duty cold-rolled steel, IP40
CPU	VIA Eden 1 GHz/ VIA C7 1.5 GHz
System Memory	1 x 200-pin DDR2 SO-DIMM max. up to 1 GB
Chipset	VIA CX700M
BIOS	Phoenix-Award 4 Mbit with RPL/PXE LAN Boot ROM, SmartView and Customer CMOS backup
System I/O Outlet	3 x RS-232 (COM 2/3/4) 1 x RS-232/422/485 (COM 1) 1 x VGA 1 x LPT 1 x PS/2 keyboard/mouse 1 x 10/100Mbps Ethernet (Realtek RTL8139DL) 3 x USB 2.0 1 x VDC power input terminal block (DC version) 1 x VAC power input connector (AC version)
Watchdog Timer	255 levels, 1 ~ 255 sec.
Storage	1 x 2.5" IDE HDD drive bay 1 x CompactFlash™ slot
Expansion Interface	N/A
System Indicator	1 x green LED for system power-on 1 x orange LED for HDD active
Power Supply	* AC AT 72W Input: 85 ~ 270VAC Output: +5V @ 10A, +12V @ 1.5A, -12V @ 0.3A * DC AT 72W Input: 18 ~ 36VDC Output: +5V @ 10A, +12V @ 1.5A, -12V @ 0.3A * DC AT 72W Input: 36 ~ 72VDC Output: +5V @ 10A, +12V @ 1.5A, -12V @ 0.3A
Operating Temperature	-10°C ~ +55°C (23°F ~ 131°F) (with W.T. CF, Eden 1 GHz) -10°C ~ +50°C (23°F ~ 122°F) (with W.T. HDD, Eden 1 GHz)
Storage Temperature	-20°C ~ +80°C (-4°F ~ +176°F)
Humidity	10% ~ 90%, non-condensing
Vibration Endurance	2 Grms with CF (5 ~ 500 Hz, X, Y, Z directions) 0.5 Grms with HDD (5 ~ 500 Hz, X, Y, Z directions)
Dimensions	225 mm (8.86") (W) x 225 mm (8.86") (D) x 63 mm (2.48") (H)
Weight (net/gross)	2.65 kg (5.84 lb)/4.2 kg (9.26 lb)
Certification	CE
EOS Support	XPE, WinCE, Linux, WES

- * XPE: Windows® XP Embedded
- * WES: Windows® XP Embedded Standard
- * WES7: Windows® XP Embedded Standard 7
- * WES8: Windows® XP Embedded Standard 8

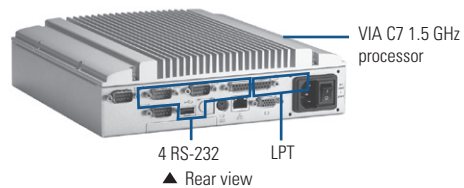
Packing List

- 1 x quick manual
- 1 x driver CD
- 1 x Y cable for PS/2 keyboard/mouse
- 1 x screw pack
- 4 x HDD anti-vibration damper
- 1 x wall mount kit

* All specifications and photos are subject to change without notice.
© 2014 Axiomtek Co., Ltd. All rights reserved.

Features

- Fanless operation
- VIA Eden/ C7 processor up to 1.5 GHz onboard
- VIA CX700M chipset
- High performance with extremely low power
- Full feature I/O
- Supports CompactFlash™
- One 2.5" IDE HDD drive bay
- 70 watt AC-in or DC-in power supply



▲ Rear view

Power Protection

AC & DC Version

- OVP (over voltage protection)
- OLD (over load protection)
- SCP (short circuit protection)

Ordering Information

Standard

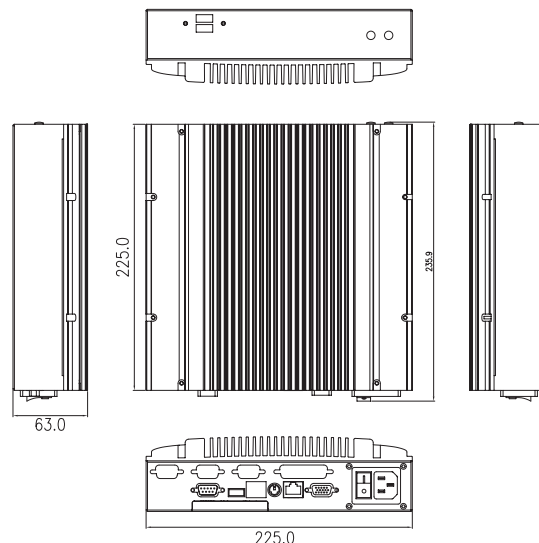
eBOX746A-FL1.0G	Fanless embedded system with VIA Eden 1.0 GHz processor, 512 MB DDR2 SO-DIMM, AC-in 70W P/S
eBOX746A-FL1.5G	Fanless embedded system with VIA C7 1.5 GHz processor, 512 MB DDR2 SO-DIMM, AC-in 70W P/S

Optional

2.5" IDE HDD	40 GB or above
DDR2 SODIMM	256 MB ~ 1 GB
Power supply	24VDC-in, 48VDC-in
CompactFlash	256 MB ~ 8 GB
Power cord	
DIN rail kit	

*Specifications and certifications are based on options and may vary.

Dimensions



Overview

Embedded Systems

Embedded Systems for Transportation

Embedded Field Controllers

Embedded MicroBoxes

Industrial Barebone Systems

Industrial Chassis

Backplanes

Power Supplies

Peripherals & Accessories