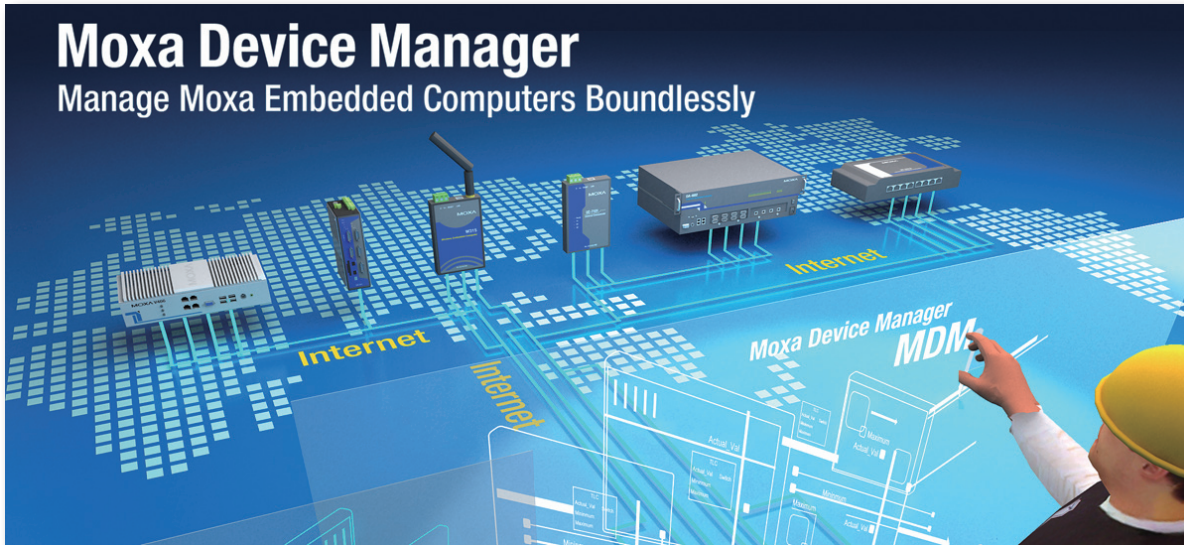


Moxa Device Manager

Unbounded management for Moxa embedded computers



Moxa Device Manager (MDM for short) is an easy-to-use remote management tool for managing Moxa's ready-to-run embedded computers on the Internet. Moxa's embedded computers make excellent front-end computers at remote sites for onsite data collection and industrial control applications. Simply put, MDM makes it easy for system administrators to manage remote computers.

Features

Remote Control Management

- Supports all of Moxa's embedded computers and all operating systems (Linux, CE, XPe)
- Control and monitor remote devices over the Internet
- Broadcast search for Moxa embedded computers on the same subnet
- Get instant device status
- Get device system information (IP, model name, product image, firmware version, OS, hostname, CPU type, memory information, and storage information) of all devices, all from the main page

Command-line Free Configuration and Maintenance

- Launch programs automatically at boot-up
- One-to-multiple file transfers including firmware upgrade (excluding EM-2260-CE, IA26X-CE, UC-712X-CE, DA-68X-LX, and XPe models) and file uploads
- Perform remote file system management
 - > Download/upload files
 - > Rename a file or directory
 - > Run/delete a file
 - > Create a directory
 - > Get the file list of a directory
 - > Change file mode (Linux only)
- Remote program monitoring and process control
- Remote system administration
 - > Network configuration settings
 - > Launch programs automatically at boot-up
 - > System time set up
 - > Reboot devices

User-friendly GUI

- Easy to use graphical user interface gives users "click and operate" management capability of remote devices
- Friendly window-based utilities make configuration easy

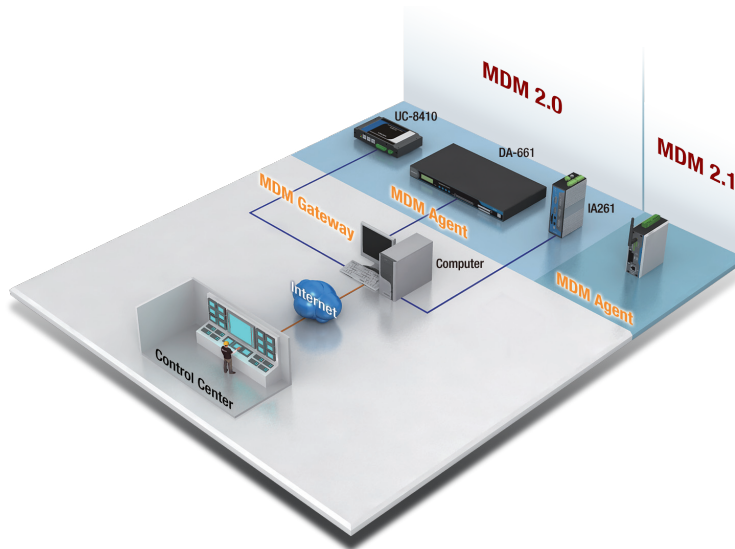
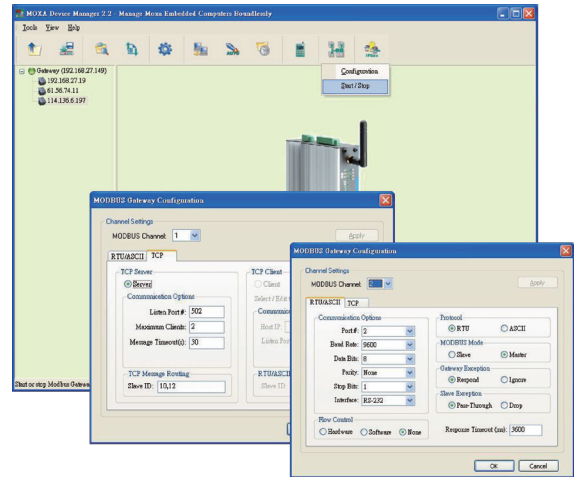
Easy Installation and Setup

- MDM Agent program running on an embedded computer can be started automatically at boot-up
- MDM Tool and Gateway can be installed on any PC running Windows XP



Mobile Configuration (for W406 Series)

- User friendly configuration for mobile setup, including GSM/GPRS/EDGE connection, and reconnection
- Interval setup, and reconnection enable/disable
- Security authentication enabler for PIN and PUK
- Disconnection diagnosis display
- Short Message Service (SMS) management, including Send & Receive SMS, SMS storage
- 10 sets of preinstalled phone books
- AT command console allows users to produce AT commands for operations such as dialing, hanging up, and changing the parameters of the connection



System Requirements

- CPU: Intel Pentium 4 processor or higher
- RAM: 1 GB (Gateway, 512 MB)
- OS: Windows XP

Free Download Information

Moxa device manager comes with MDM Agent, MDM Tool, and MDM Gateway (users can download the package from the Moxa website in the Support/Software section)

- MDM 2.0 Tool Software
- MDM 2.1 Tool Software (W406)
- MDM 2.0 Agent Software
- MDM 2.1 Agent Software (W406)
- MDM 2.0 Gateway Software