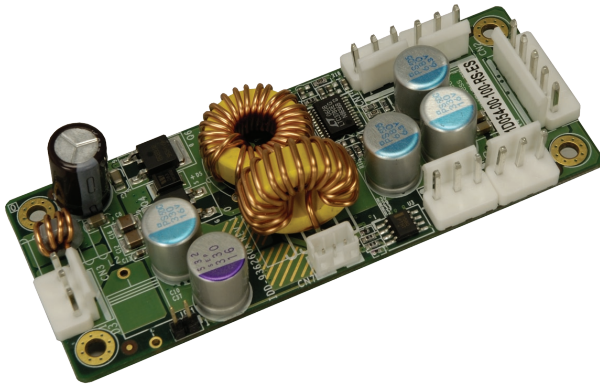


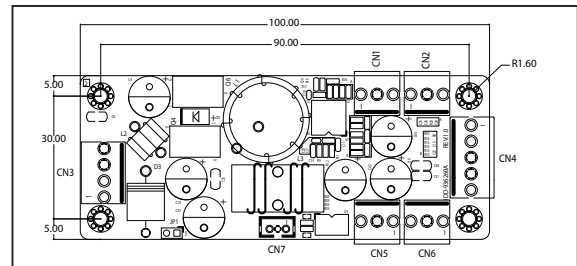
# IDD-936260A 60W DC/DC Converter Module



## Features

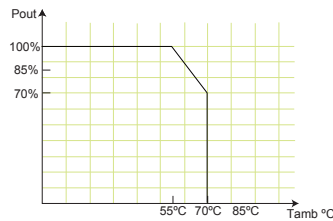
- Wide Input Range: 9-36V DC
- AT or ATX Mode On/Off
- Up to 90% Efficiency
- RoHS Compliant
- Compact Size

## Dimensions (Millimeters)



## Specifications

- Output: 12V@3A (Max.), 5V@10A (Max.) & 5VSB@0.5A (Max.)  
Max. Total Output: 60W
- Input: 9VDC to 36VDC
- Performance Characteristics  
Noise & Ripple: <240mV  
Line Regulation: <50mV  
Load Regulation: <100mV  
Efficiency: Up to 90%
- Dimensions: 40mm x 100mm
- Weight: NW: 58g
- Operating Temperature: -20°C ~ 70°C



## PIN Assignments

### Input Power Connector

CN3	Pin 1	Pin 2	Pin 3	Pin 4
	VIN	VIN	GND	GND

### Output Power Connector

CN4	Pin 1	Pin 2	Pin 3	Pin 4	Pin 5
	+5V	+5V	GND	GND	+12V

CN1	Pin 1	Pin 2	Pin 3
CN2	+5V	GND	+12V
CN5			
CN6			

### ATX Mode Connector

CN7	Pin 1	Pin 2	Pin 3
	5VSB	GND	PS_ON

## Packing List

- 1 x IDD-936260A
- 1 x QIG

## Ordering Information

Part No.	Description
<b>IDD-936260A-R10</b>	60W DC/DC 9~36V input; 12V, 5V & 5VSB output
<b>CB-5PSBC-RS</b>	20cm Cable to SBC Power Input
<b>CB-JST3PSW-RS</b>	30cm Cable ON/Off Switch
<b>CB-JST3P001-RS</b>	30cm 5VSB, PS_ON Wire to SBC
<b>CB-3PSATA-RS</b>	10cm Cable for SATA Power
<b>CB-3PIDE-RS</b>	10cm Cable for IDE HDD Power
<b>CB-P1LP4-RS</b>	20cm Cable for 63000-FSP0601AD101C 60W AC-DC adapter
<b>CB-MD4P4-RS</b>	20cm Cable for 63000-FSP120AAB-RS 120W AC-DC adapter
<b>CB-NOLP4-RS</b>	20cm Cable for Terminal Block DC Input

## Wire Harness Selection Guide

### DC Input (CN3)



**Option 1.**  
**PN: CB-P1LP4-RS**  
Cable for 63000-FSP0601AD101C 60W AC-DC adapter



**Option 2.**  
**PN: CB-MD4P4-RS**  
Cable for 63000-FSP120AAB-RS 120W AC-DC adapter



**Option 3.**  
**PN: CB-NOLP4-RS**  
Cable for Terminal Block

### I/O Power (CN1, CN2, CN5 & CN6)



**Option 1.**  
**PN: CB-3PSATA-RS**  
Cable for SATA

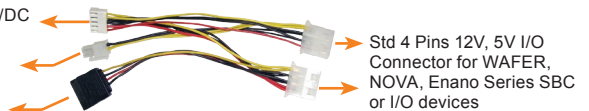


**Option 2.**  
**PN: CB-3PIDE-RS**  
Cable for IDE HDD or any STD 4 pins I/O devices

### SBC Main Power (CN4)

**Option 1.**  
**PN: CB-5PSBC-RS**

5 Pins connector to DC/DC Power Modules CN4  
12V only connector for NANO Series SBC  
Cable for SATA HDD



Std 4 Pins 12V, 5V I/O Connector for WAFER, NOVA, Enano Series SBC or I/O devices

### Power On/Off (CN7)



**Option 1.**  
**PN: CB-JST3PSW-RS**  
Cable with On/Off Switch



**Option 2.**  
**PN: CB-JST3P001-RS**  
Cable to SBC (5VSB & PS\_ON)