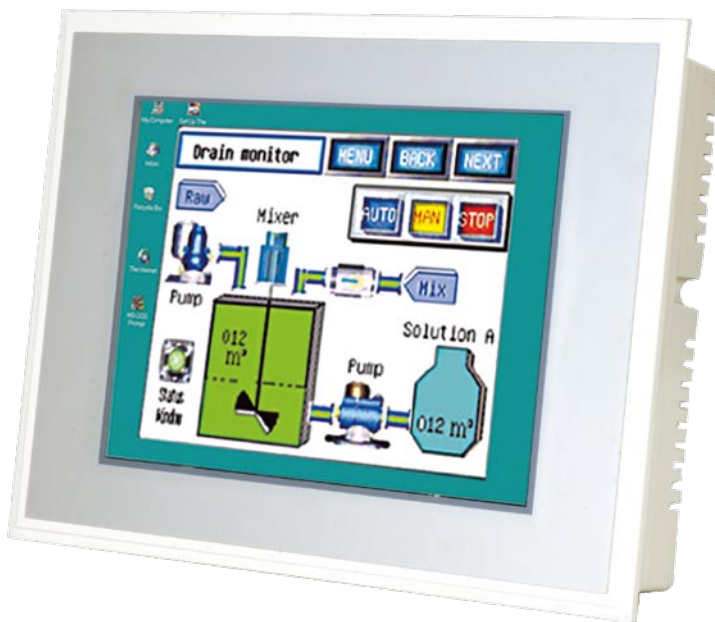


# IOVU-1000

10.4" TFT, SVGA, 16-bit color, touch Open HMI

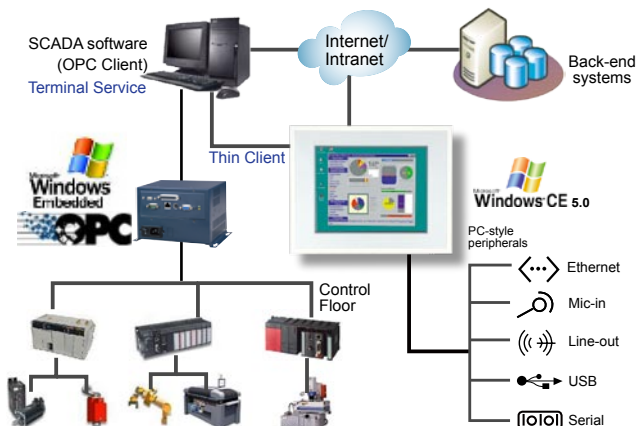
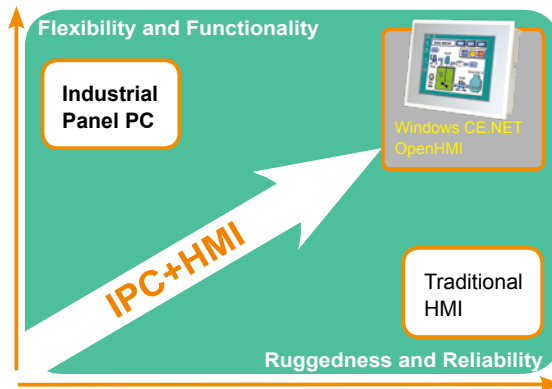
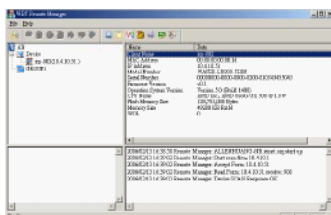
The IOVU series industrial CE touch open HMIs offer both the reliability like a traditional HMI and the flexibility of a PC. With an OPEN HMI, you are able to run your own or third-party software. Furthermore, it is designed for use as a thin client device in a remote terminal environment. The IOVU series is powered by open Windows CE .NET 5.0 with rich application development support and connectivity to network and I/O devices.



## Feature

- The IOVU series Open HMIs are designed to fill the gap between traditional HMI products and full blown industrial PCs, typically offering increased functionality and flexibility over traditional HMIs at a lower cost than industrial PCs. And with an OPEN HMI, you are able to run your own or third-party software. Furthermore, it is also designed for use as a thin client device in a remote terminal environment.
- Highly durability in harsh environments, due to rugged, compact, wide-temperature and low power consumption embedded hardware design without failure-prone hard disk and fan.
- Fancy PC-style peripherals including Ethernet ports, serial ports, USB ports, Compact Flash memory, audio, and touch input.
- Dual Ethernet ports to help system administrators to secure and separate their network segments by field applications as well as communications to back-end legacy systems and central database.
- Powered by popular open Windows CE .NET embedded hard real-time operating system to provide rich Windows-based functions and application software development support.

- IOVU HMI utilities and Remote Management Tools make it easy to manage your IOVU HMIs centrally and remotely.



## Specification

### System

- Intel XScale PXA270 520MHz processor
- 2 MB boot flash
- 128 MB SDRAM
- 128 MB Compact Flash  
(38 MB reserved for Windows CE 5.0, 90 MB for user data and programs)
- Battery-backup RTC
- Watch Dog Timer
- Reset button

### Display :

- Type : Color Active Matrix TFT
- Size : 10.4"
- Resolution : 800 x 600, 16 bit color graphics
- Brightness : 230 cd/m<sup>2</sup>
- Input : 4-wired resistive touch panel

### I/O and Communication :

- Ethernet : 10/100 Mbps x 2
- Serial port : RS-232 x 1, RS-485/422/232 x 1
- USB : Host (Rev. 1.1) x 2
- Audio : Mic-in x 1, Line-out x 1

### Power :

- Power Supply : AC 100-240V power input
- Power Consumption : 15W

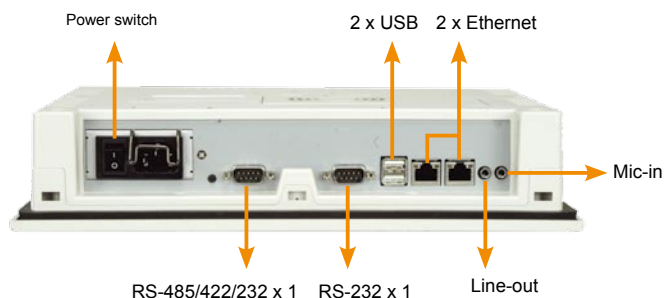
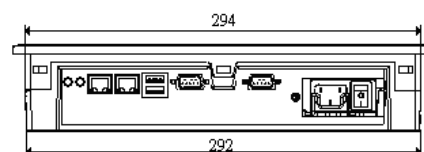
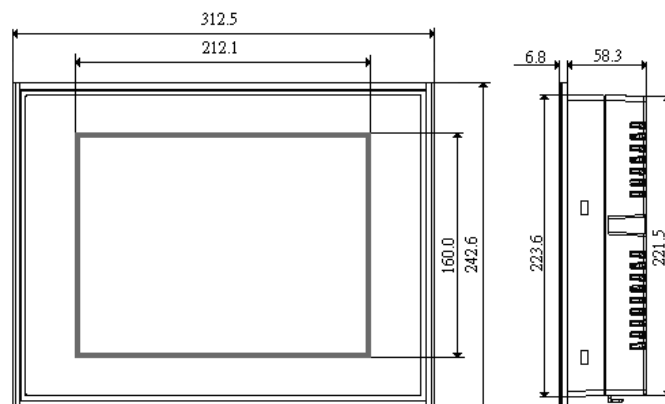
### Environmental :

- Operation Temperature : 0 – 50°C
- Humidity : 5%RH to 90%RH (non-condensing)
- Vibration : 5~17Hz, 0.1" double amplitude displacement;  
17~640Hz, 1.5G acceleration peak to peak.
- Shock : 10G acceleration peak to peak
- EMC : BSMI, FCC and CE certified
- Safety: UL, TUV, CCC
- Front panel meet IP65 standard

### Color :

- Cool Gray (Pantone : 2C)

## Dimensions



## Ordering Information

Part No.	Description
IOVU-1000-R10	10.4" TFT, SVGA, 16-bit color, touch Open HMI with built-in Windows CE 5.0 license

## Packaging List

1 x IOVU-1000  
1 x Utility CD including SDK, utilities, and technical documentations  
1 x Power cable

1 x Null modem cable  
1 x Touch pen  
1 x Screw kit



### Headquarters

#### IEI Technology Corp.

TEL : +886-2-86916798 FAX : +886-2-66160028  
sales@ieiworld.com www.ieiworld.com  
No. 29, Zhongxing Rd., Sijhih City, Taipei County, 221, Taiwan

### America-United States

#### IEI Technology USA Corp.

TEL : +1-562-690-6677 FAX : +1-562-690-0898  
sales@usa.ieiworld.com www.usa.ieiworld.com  
515 N. Puente St., Brea, CA 92821

### China

#### Armorlink SH Corp.

TEL : +86-021-54429000 FAX : +86-021-54429100  
sales@ieiworld.com.cn www.ieiworld.com.cn  
No.515, Shenfu Road, Minhang District, Shanghai, China