

# ANT-WSB-PNF-12

**Directional panel antenna: 12 dBi at 2.4 GHz**



- > High-gain antenna to enhance performance
- > Waterproof N-type connector
- > Lightweight
- > Compact form factor
- > Pole-mounting support
- > Housing provides IP65 protection
- > -40 to 80°C operating temperature range

## Specifications

### Antenna Characteristics

**Frequency:** 2.4 to 2.5 or 5.1 to 5.9 GHz

**Antenna Type:** Directional panel type

**Typical Antenna Gain:** 12 dBi

**Connector:** N-type (female)

**Impedance:** 50±5 ohms

**Polarization:** Linear

**HPBW/horizontal:** 50°

**HPBW/vertical:** 30°

**V.S.W.R.:** 1:1.5 max.

**Power Handling:** 10 W max.

### Physical Characteristics

**Weight:** 560 g (incl. Antenna holder)

**Dimensions:**

215 x 90 x 30 mm

**IP Rating:** IP65

**Radome Color:** White

**Radome Material:** PVC

### Environmental Limits

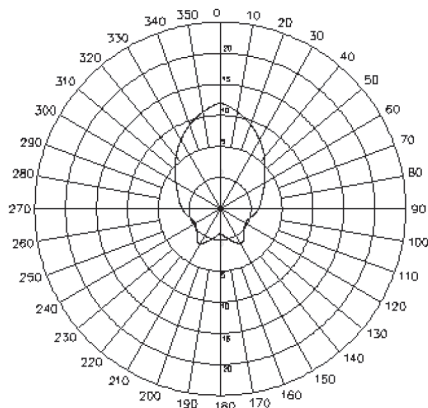
**Operating Temperature:** -40 to 80°C (-40 to 176°F)

**Storage Temperature:** -40 to 80°C (-40 to 176°F)

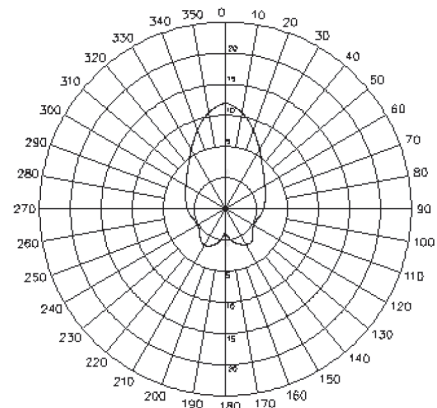
**Ambient Relative Humidity:** 5 to 95% (30°C, non-condensing)

## Field Patterns

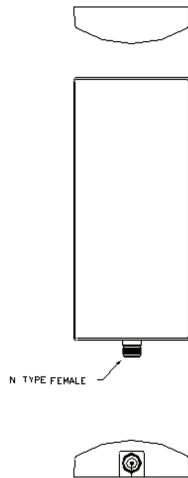
### H-plane



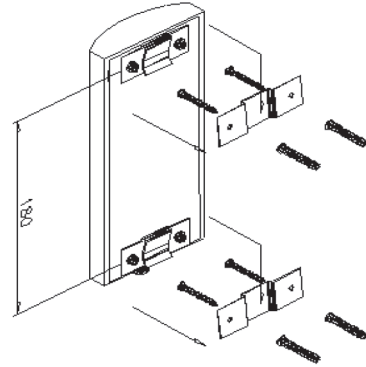
### E-plane



## Dimensions



## Mounting



## : Ordering Information

### Available Models

**ANT-WSB-PNF-12:** 2.4 GHz, panel antenna, 12 dBi, N-type (female)

### Optional Accessories (can be purchased separately)

**WK-HA1002SU:** Swivel mounting kit, with swivel range of 90° horizontal, 40° vertical

**A-CRF-NMNM-LL4-300:** LMR-400 LITE cable, N-type (male) to N-type (male), 3 meters

**A-CRF-NMNM-LL4-600:** LMR-400 LITE cable, N-type (male) to N-type (male), 6 meters

**A-CRF-NMNM-LL4-900:** LMR-400 LITE cable, N-type (male) to N-type (male), 9 meters

**CRF-N0429N-3M:** CFD400 cable, N-type (male) to N-type (male), 3 meters

**CRF-N0117SA-3M:** CFD200 cable, N-type (male) to RP SMA (male), 3 meters

**A-CRF-RMNM-L1-300:** LMR-195 LITE cable, N-type (male) to RP SMA (male), 3 meters

**A-CRF-RMNM-L1-600:** LMR-195 LITE cable, N-type (male) to RP SMA (male), 6 meters

**A-CRF-RMNM-L1-900:** LMR-195 LITE cable, N-type (male) to RP SMA (male), 9 meters

### Can be used with the following products

**AWK Series:** AWK-3121, AWK-4121, AWK-5222, AWK-6222

**NPort W2000 Series:** NPort W2150 Plus, NPort W2250 Plus, NPort W2004